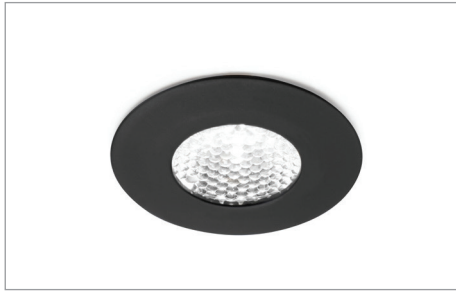




SWS
HARDWARE

PIXEL



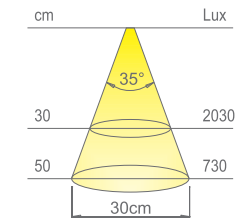
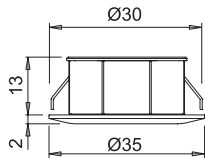
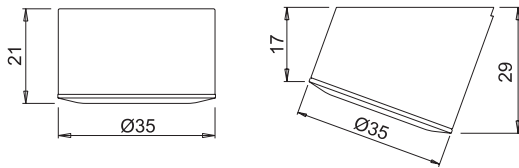


PIXEL
recessed LED luminaire

Watt	Volt
1W	24VDC



Upon request, the PIXEL SP and PIXEL OB configurations are available for surface installation. SP and OB spacers are also sold separately.



values referred to PIXEL 4000K

Colour appearance	super warm white	natural white
Colour temperature	2700 K	4000 K
Luminous flux	95 lm	105 lm
Luminous efficiency	95 lm/W	105 lm/W
CRI	Ra 81	Ra 82

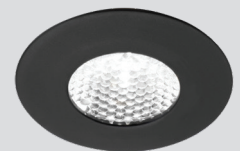
PIXEL

recessed LED luminaire

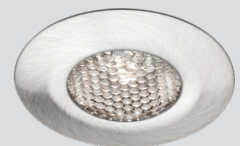


PIXEL is a micro spotlight with symmetrical accent light projection for recessed installation in a groove, recommended for application to the inside of glass cabinets. PIXEL is installed in both through and blind holes with 30 mm diameter and comes standard with 2000 mm power cord and Micro24 connector.

The configurations for surface (PIXEL SP) and tilted emission surface installation are available on request. The spacers of these two configurations can also be supplied separately. Power supply not included. To be ordered separately.



black touch



satin nickel